



SCT-16A

FEATURE

- Split-core type with clip-on design, easy installation at set-up devices and distribution board
- Built-in circuit protection from over voltage even secondary circuit open
- Compact size works up to 120A AC
- Cost-effective solution
- Two ends hook attached to secure primary conductor with cable-ties
- Applicable for power saving facilities and overload protection systems
- Applicable for 5A secondary output of current transformer
- Isolated plastic case recognized according to UL 94-V0

SPECIFICATION

Model no.	SCT-16A
Primary Current Range	10mA ~ 120A RMS (50/60Hz), $RL \leq 10\Omega$
Application frequency	10~5KHz
Accuracy of the Linearity	CLASS 1.0 , $RL \leq 10\Omega$
Maximum Primary Current	300A RMS continuous
Primary Conductor Hole	$\varnothing 16\text{mm}$
Output Features	refer to graphic
Coil of Secondary Circuit	3000 ± 2 turns (With 10.2V Suppressor inside)
Coil Resistance of Secondary Circuit	$290\Omega \pm 10\%$ (at 25°C)
Enclosure Material	NYLON Flame Retardant (UL-94V0)
Output Cord Length	Typical 150 mm (different length also available with customer's request)
Max circuit voltage	AC 600V
Dielectric Strength	1000V AC / 1min between primary conductor hole and output
Open circuit protection	10.2V (Zener diode)
Insulation Resistance	$> 100M\Omega$ at 500V DC between primary conductor hole and output
Weight	approx. 70 g
Operating Condition	-20 ~60°C, below 80% R.H. no condensation
Storage Condition	-30 ~70°C, below 70%R.H. no condensation

得益工業儀器有限公司

DER EE

ELECTRICAL INSTRUMENT CO., LTD.

7F, No. 351, Sec. 2, Chung Shan Rd.,
Chung Ho Dist., New Taipei City, Taiwan

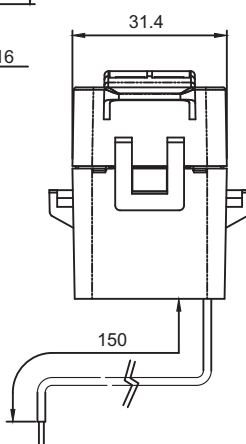
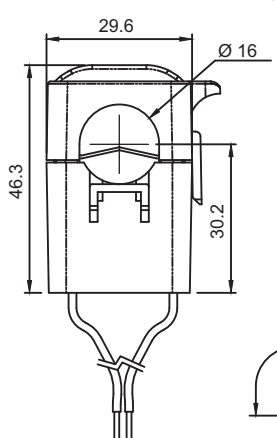
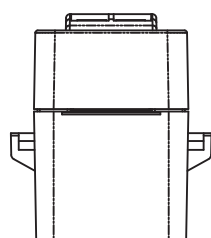
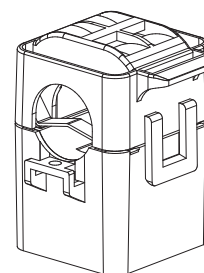
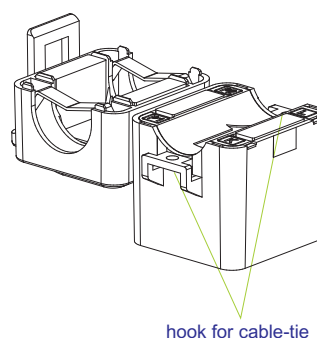
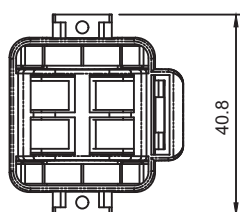
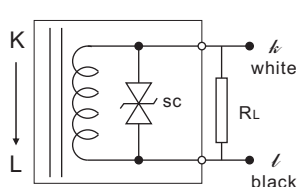
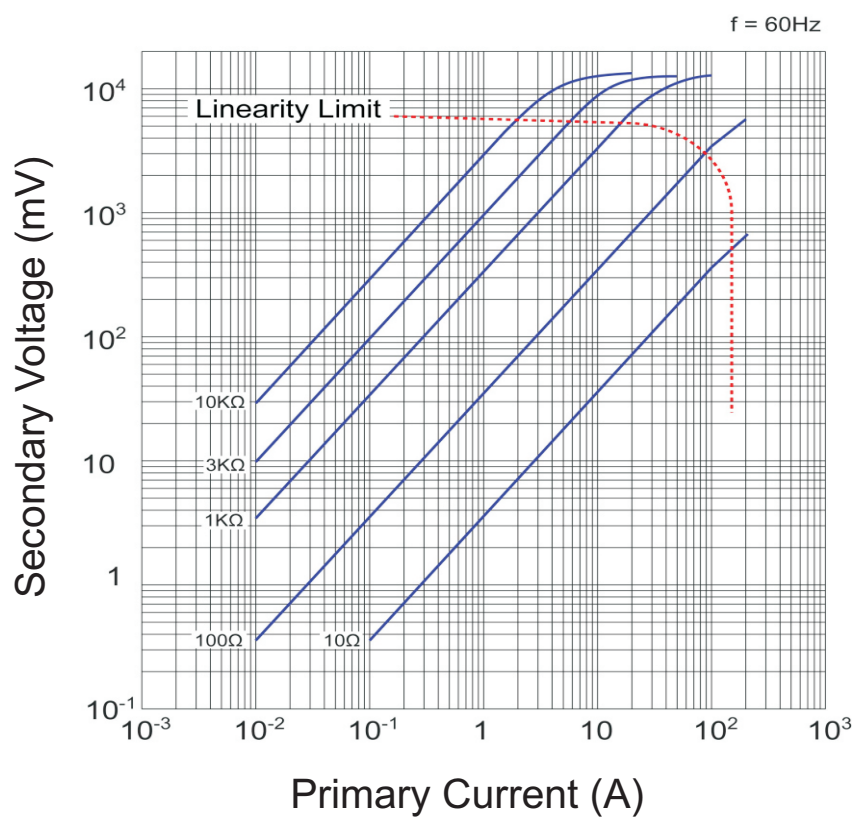
TEL:886-2-2226-6789(REP.) FAX:886-2-2226-7979

E-mail:deree@ms21.hinet.net

<http://www.deree.com.tw>

SCT-16A

Graphic of Primary Current and Secondary Voltage



得益工業儀器有限公司

DER EE

ELECTRICAL INSTRUMENT CO., LTD.

7F, No. 351, Sec. 2, Chung Shan Rd.,
Chung Ho Dist., New Taipei City, Taiwan
TEL: 886-2-2226-6789 (REP.) FAX: 886-2-2226-7979
E-mail: deree@ms21.hinet.net
<http://www.deree.com.tw>

Specifications and appearance may be revised if needed without any prior notice. Any further product info, please contact us.